

6 3 0 6 12 18 24 30
Miles

NATURAL GAS SERVICE AREAS

- | | |
|---|--|
| CASCADE NATURAL GAS CORPORATION | PUGET SOUND ENERGY |
| CITY OF BUCKLEY | NORTHWEST NATURAL GAS |
| AVISTA UTILITIES CORPORATION | CITY OF ELLENSBURG |
| CITY OF ENUMCLAW | |

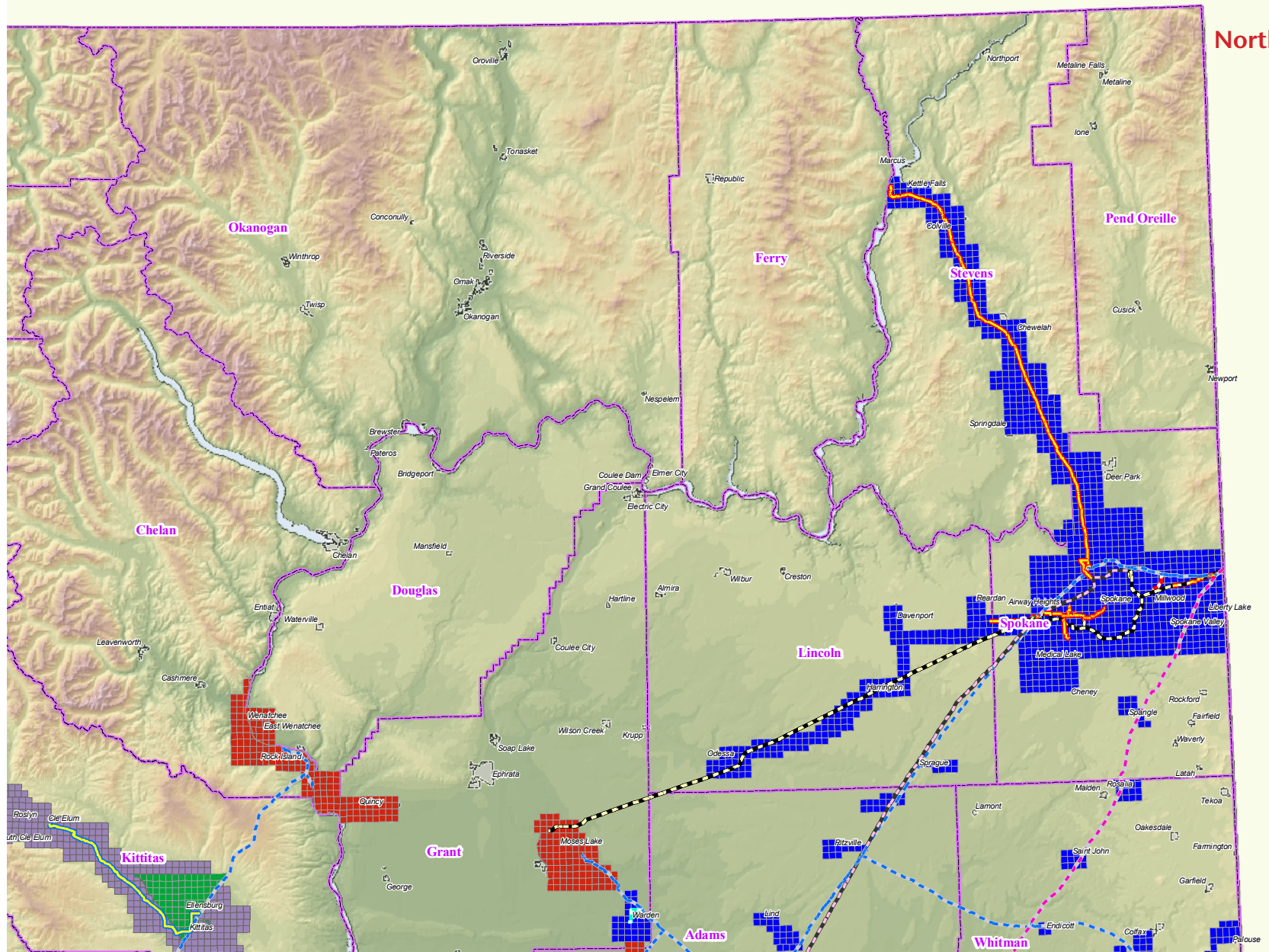
LOCAL DISTRIBUTION COMPANIES

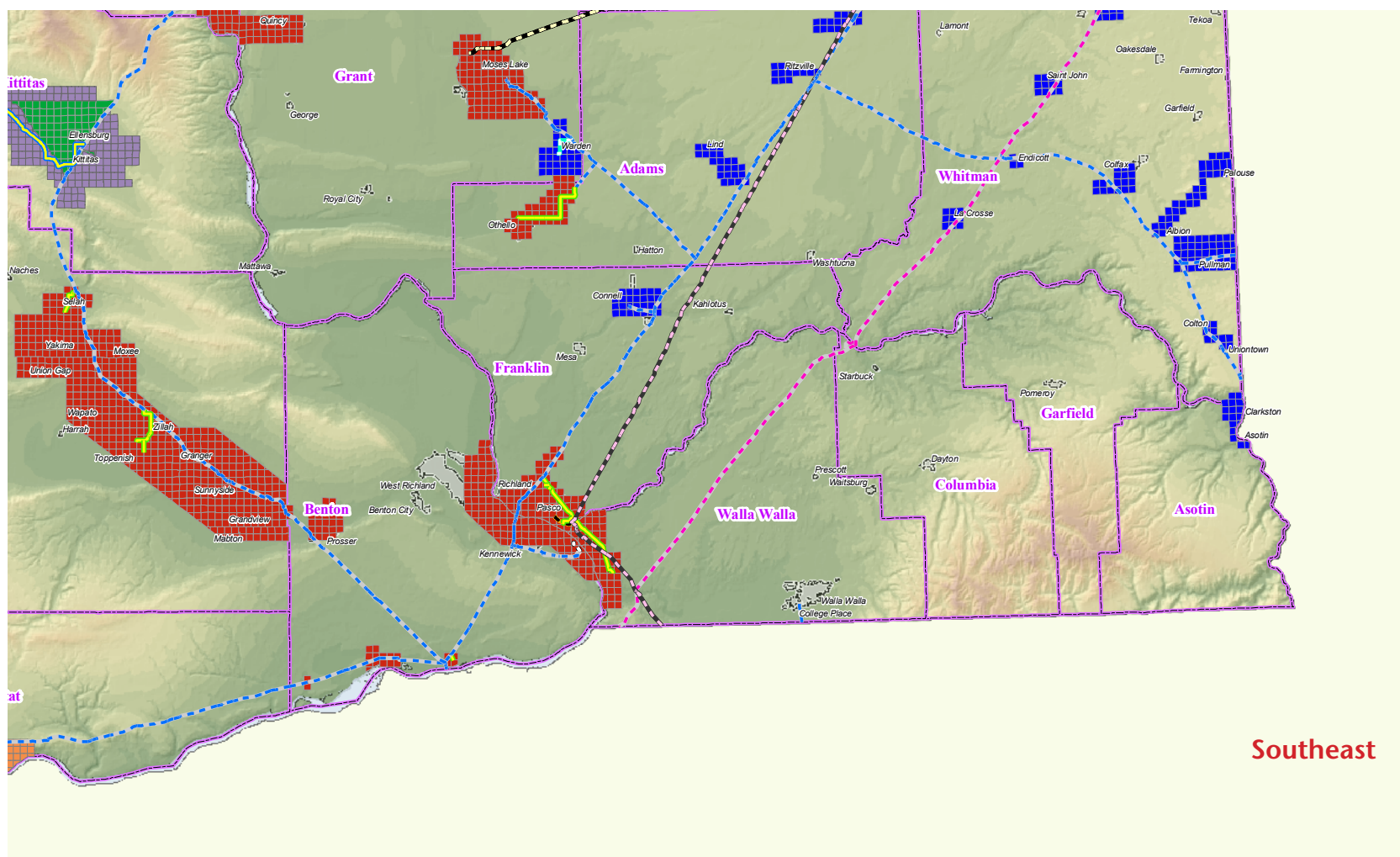
- | |
|---|
| AVISTA UTILITIES CORPORATION |
| CASCADE NATURAL GAS CORP |
| NORTHWEST NATURAL GAS |
| PUGET SOUND ENERGY |

INTERSTATE GAS AND LIQUIDS














- | |
|--|
| BP - OLYMPIC PIPELINE COMPANY |
| CHEVRON PIPE LINE COMPANY |
| CONOCO PHILLIPS CORPORATION |
| KINDER MORGAN CANADA |
| TRANSCANADA'S GTN SYSTEM |
| WILLIAMS GAS PIPELINE - WEST |

Northeast





Southeast

INTRASTATE LIQUIDS AND DIRECT SALES		ADDITIONAL FEATURES	 Washington State Natural Gas Transmission, Utilities and Transportation Commission	Washington State Natural Gas Transmission, Hazardous Liquids, and Pipelines Operating over 250 psig. Updated: 3/25/2009 DCC Note: -- No Representation or warranty is made concerning the accuracy, currency completeness or quality of the data on this map.
 AGRIUM, U.S. INC.  BP CHERRY POINT REFINERY  CARDINAL GLASS  FERNDALE PIPELINE SYSTEM  GEORGIA PACIFIC CORPORATION  INLAND EMPIRE PAPER COMPANY	 NUSTAR ENERGY L.P.  OCHOA AG UNLIMITED FOODS  SUMAS COGENERATION COMPANY L.P.  TIDEWATER BARGE LINES  U.S. OIL & REFINING McChord CO.  WEYERHAEUSER PAPER COMPANY			
		 CITIES  COUNTIES	Sheet Identifier -WaGen-	